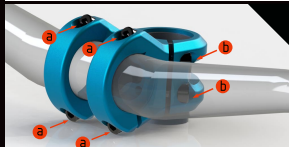


NS BIKES QUANTUM INSTRUCTION SHEET

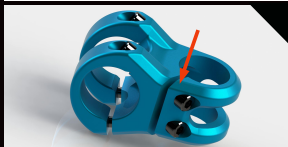
NS
BIKES

Bolts tightening torque

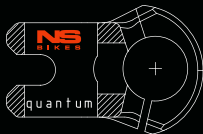


a bolt - 12 Nm
b bolt - 14 Nm - tighten these alternately

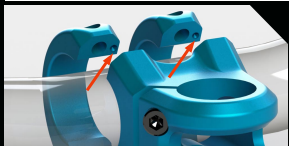
Stem position on the bike



The clamp must be on the left side of the stem when mounted on the bike



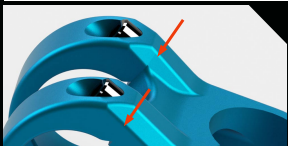
Clamp position



Dots mark the upper side

! IMPORTANT SAFETY INFORMATION:
steertube stack over the headset
& spacers: MIN 34mm , MAX 35mm

No gap



Tighten the upper clamp bolts so there is no gap between the clamp and the body first, then bottom